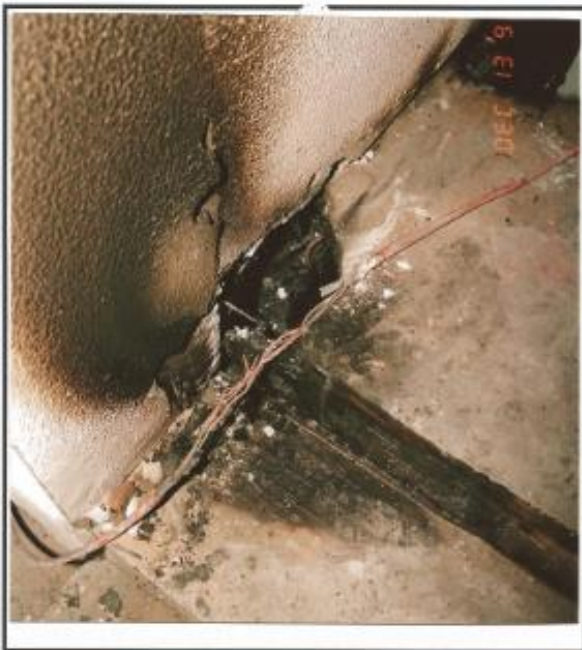


“KEEPING PACE” - #46

ARC IGNITES WOOD:

The photograph on the left shows an extension cord in a city hall under construction in Whitesburg, Kentucky. The cord short circuited and ignited the wood floor directly. The fire then burned downward through the floor into a single ceiling space. The fire was confined to this ceiling space when it was extinguished. No other cause in the ceiling space could be identified.

Residential short circuit arcs have a temperature of at least 5000°F. In addition, they create molten copper globules which fly out to land on combustibles up to three feet away. For a video which shows flying copper globules igniting three blankets before the circuit breaker pops, please go to www.PaceForensic.com/Videos and watch Video #2.



TWO ORIGINS:

The photograph on the right shows two separate fires which were ignited in papers by molten copper globules flying in opposite directions from a short circuit arc in a male plug connected to the outlet shown by the red arrow.

Frederick F. Franklin, P.E.
Forensic Engineer